



Broadhurst Gardens NW6

Parkheath  
*Sold on Service*





**Broadhurst Gardens, NW6**  
**Asking Price**  
**£875,000, Leasehold**  
**Camden Band F**

- Exemplary 2 double bedroom, 2 bathroom apartment
- Arranged over second and third floor (top) of semi-detached house
- 885 sq ft / 80.9 sq m
- Stunning open plan 22' reception room with vaulted ceilings
- Guest WC and plenty of storage space plus external bike storage room
- 2 double bedrooms with en-suite bathroom and shower rooms and fitted storage
- Underfloor heating and built in music system
- Prime South Hampstead conservation area location
- 1 minute walk to Finchley Road



Belsize Park  
 208 Haverstock Hill  
 NW3 2AG  
 Sales 020 7431 1234  
 Lettings 020 7431 3104  
 nw3@parkheath.com

South Hampstead  
 8a Canfield Gardens  
 NW6 3BS  
 Sales 020 7625 4567  
 Lettings 020 7644 0800  
 nw6@parkheath.com

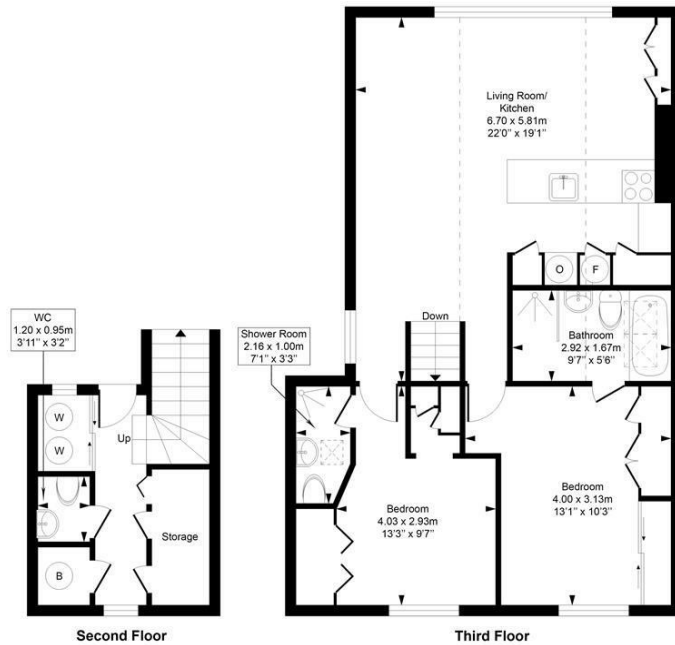
West Hampstead  
 192 West End Lane  
 NW6 1SG  
 Sales & Lettings  
 Tel 020 7794 7111  
 192@parkheath.com

Kentish Town  
 148 Kentish Town Rd  
 NW1 9QB  
 Tel 020 7485 0400  
 kt@parkheath.com

Kensal Rise  
 54-56 Chamberlayne Rd  
 NW10 3JH  
 Tel 020 8960 4845  
 kensal@parkheath.com

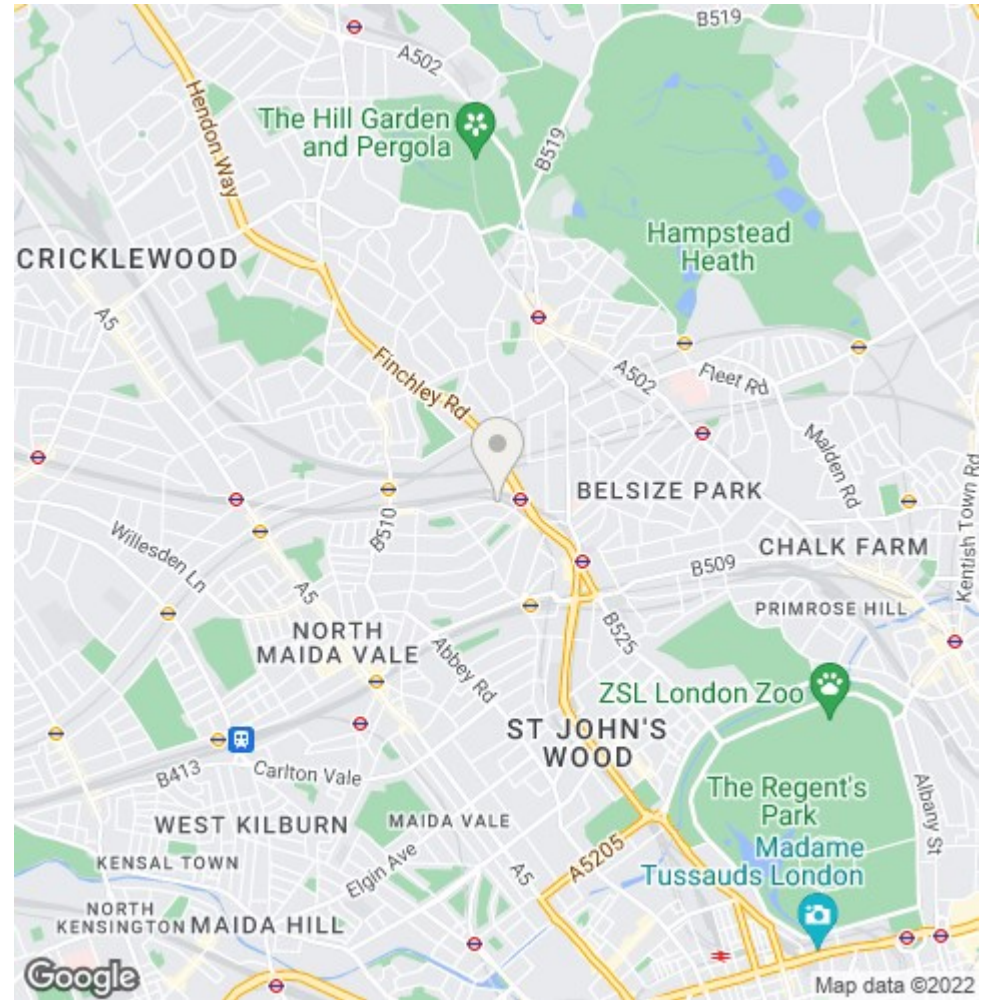
Property Management  
 192 West End Lane  
 NW6 1SG  
 020 7433 6174  
 pm@parkheath.com

**Broadhurst Gardens**  
 Approximate Gross Internal Area = 82.2 Sq m / 885 sq ft



This plan is for layout guidance only. Drawn in accordance with RICS guidelines. Not drawn to scale unless stated. Windows & door openings are approximate. Whilst every care is taken in the preparation of this plan, please check all dimensions, shapes & compass bearings before marking any decisions reliant upon them.

ELLIE CLAIRE PHOTOGRAPHY LTD  
 www.ellieclairephotography.com



The particulars do not constitute part of an offer or contract. The particulars, including text, photographs and plans, are for the guidance only of prospective purchasers/tenants and must not be relied upon as statements of fact. The descriptions provided therein represent the opinion of the author and whilst given in good faith should not be construed as statements of fact. Nothing in these particulars shall be deemed a statement that the property is in good condition or otherwise or that any services or facilities are in good working order. All measurements are approximate